



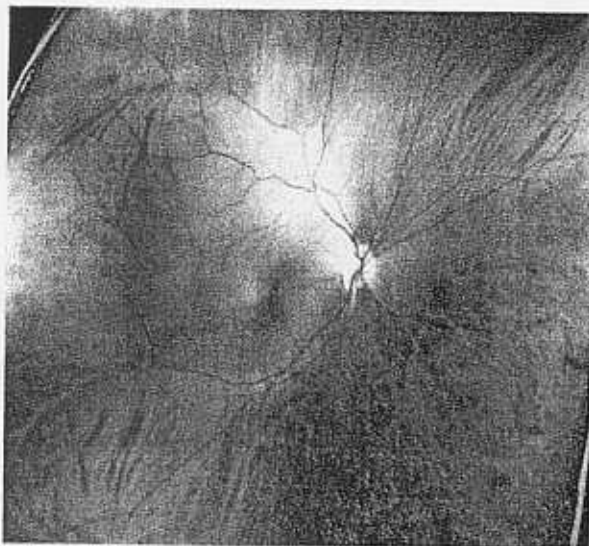
In our continued efforts to bring the most advanced technology available to our patients, North County Optometry is proud to announce the inclusion of the Optomap retinal exam as an integral part of your eye exam today.

Dr. Mitchell Shulkin is concerned about retinal problems including macular degeneration, glaucoma, retinal holes or detachments, and systemic diseases such as diabetes, stroke, and high blood pressure. These conditions can lead to serious health problems, including partial loss of vision or blindness, and often develop without warning and progress with no symptoms.

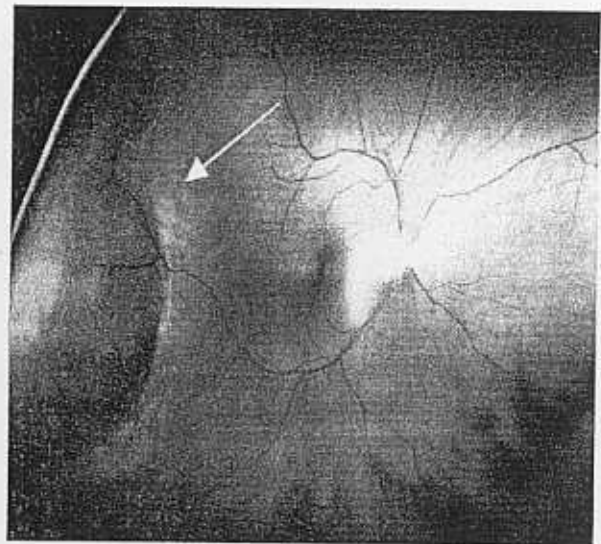
An Optomap exam provides:

- An eye wellness scan.
- An in depth view of the retinal layers (where disease can start).
- The ability for you to view your Optomap retinal image with your Doctor during your exam.
- An annual, permanent record for your medical file, which gives your Doctor comparisons for tracking and diagnosing potential eye disease.

The Optomap exam is fast, easy, and comfortable.



Healthy Retina



Unhealthy Retina

Insurance typically does not cover any advanced screening technology beyond the general eye exam. Your Doctor prescribes the Optomap retinal exam for all patients. We will be performing the Optomap Retinal Exam as an enhancement to the general eye exam for a fee of \$35.00.

EYE HEALTH EXAMS

North County Optometry and Dr. Mitchell Shulkin highly recommend Optomap retinal exams to enhance disease detection. Optomap retinal exams are a digital scan of the retina that allows a more detailed and expanded view of the retina over traditional instruments. These scans are stored as an image of your eye and can be compared to future scans. The scans can be reviewed and enhanced using the advanced Optos software. Early detection means early treatment that may enable you to 1) maintain your good vision 2) minimize recovery time 3) avoid extensive more invasive treatments. Most diseases have NO SYMPTOMS in the early stages. Eye conditions such as macular degeneration glaucoma and retinal hole and detachments do not affect vision until they are advanced and may lead to partial loss of vision or blindness. Systemic problems such as diabetes, high blood pressure and stroke have a marked affect on vision and can be seen in the eye BEFORE you notice symptoms. Optomap retinal exams are usually not covered by insurance's such as VSP, but the additional cost of \$35.00 is relatively inexpensive for digital imaging.

In the event you would not like the Optomap retinal exam performed, we would recommend that we dilate your eyes with dilating pharmaceutical eye drops. These drops take 20-30 minutes to take effect. They may cause blurred vision especially for close work and will make you more sensitive to light. These drops will last from 6-8 hours and may make driving more difficult. Dilation will give us a little extra margin of disease detection using our traditional instruments. There is no additional cost for dilation.

INFORMED CONSENT

_____ Please perform an Optomap eye scan.

_____ I do not wish to take advantage of the eye scan, please dilate my pupils. I understand that the drops will last for 6-8 hours and may impair my vision.

_____ Please do not dilate my pupils or complete an eye scan.

LIABILITY RELEASE

I understand that by not doing either procedure that certain diseases may go undetected and I will not hold North County Optometry or Dr. Mitchell Shulkin liable for any damages that be incur due to my decision.

Signature _____ Date _____